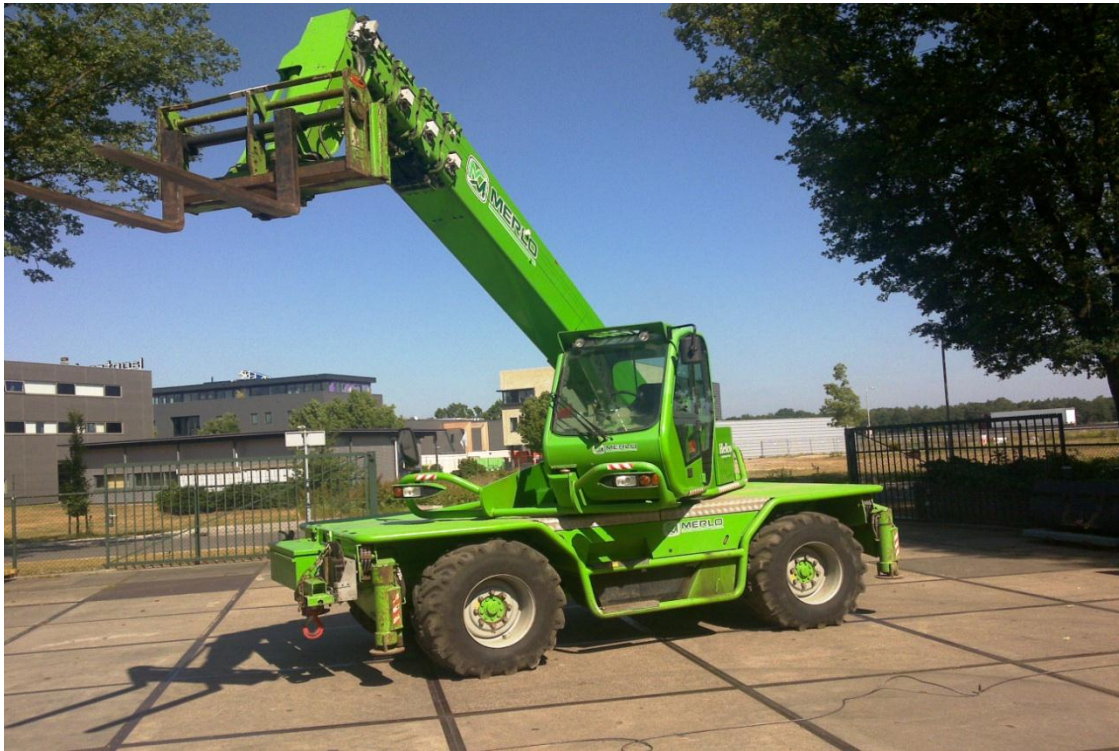


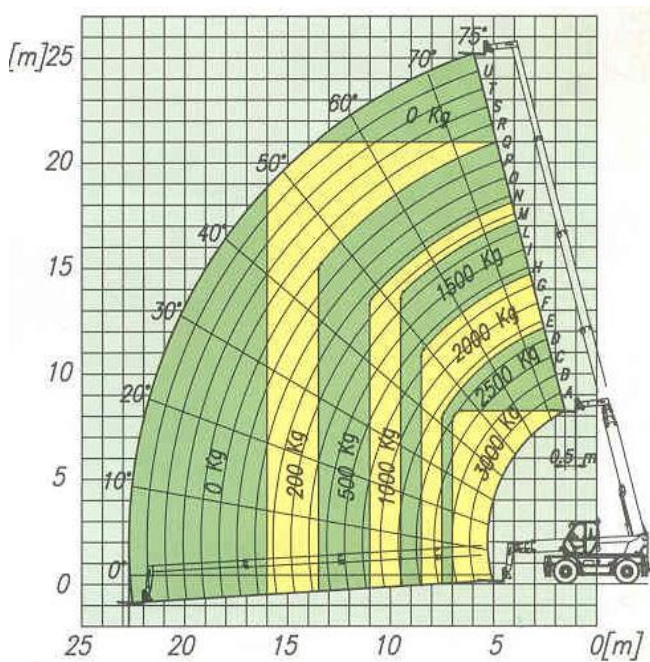
MERLO 40.25 MCSS

(Diesel)

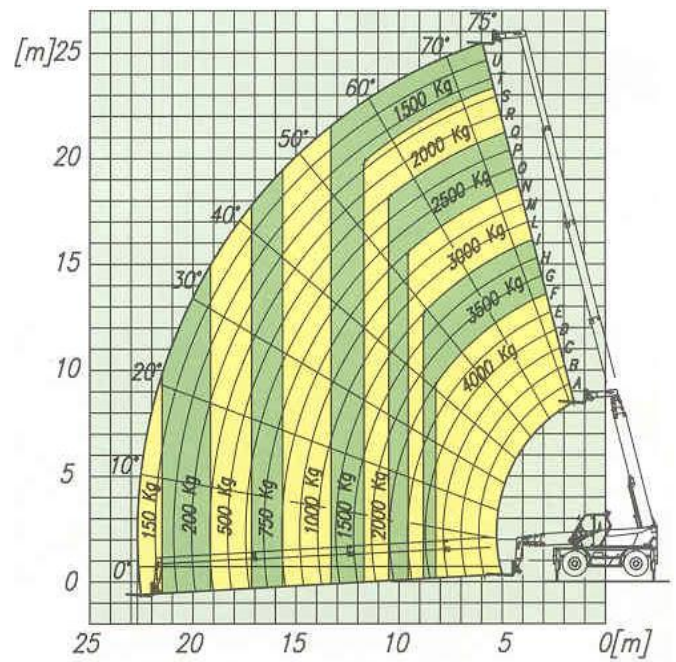


VLUCHTSHEMA

HEFCAPACITEIT OP BANDEN



HEFCAPACITEIT OP STEMPELS



HEFHOOGTE :	25.25 M		
DOORRIJHOOGTE:	2.99 M (KAN AFWIJKEN i.v.m. BANDEN)		
BREEDTE:	2.45 M	TRANSPORTLENGTE:	7 M
STEMPEL BREEDTE MAX. :	5 M	EIGEN GEWICHT :	15500 KG