

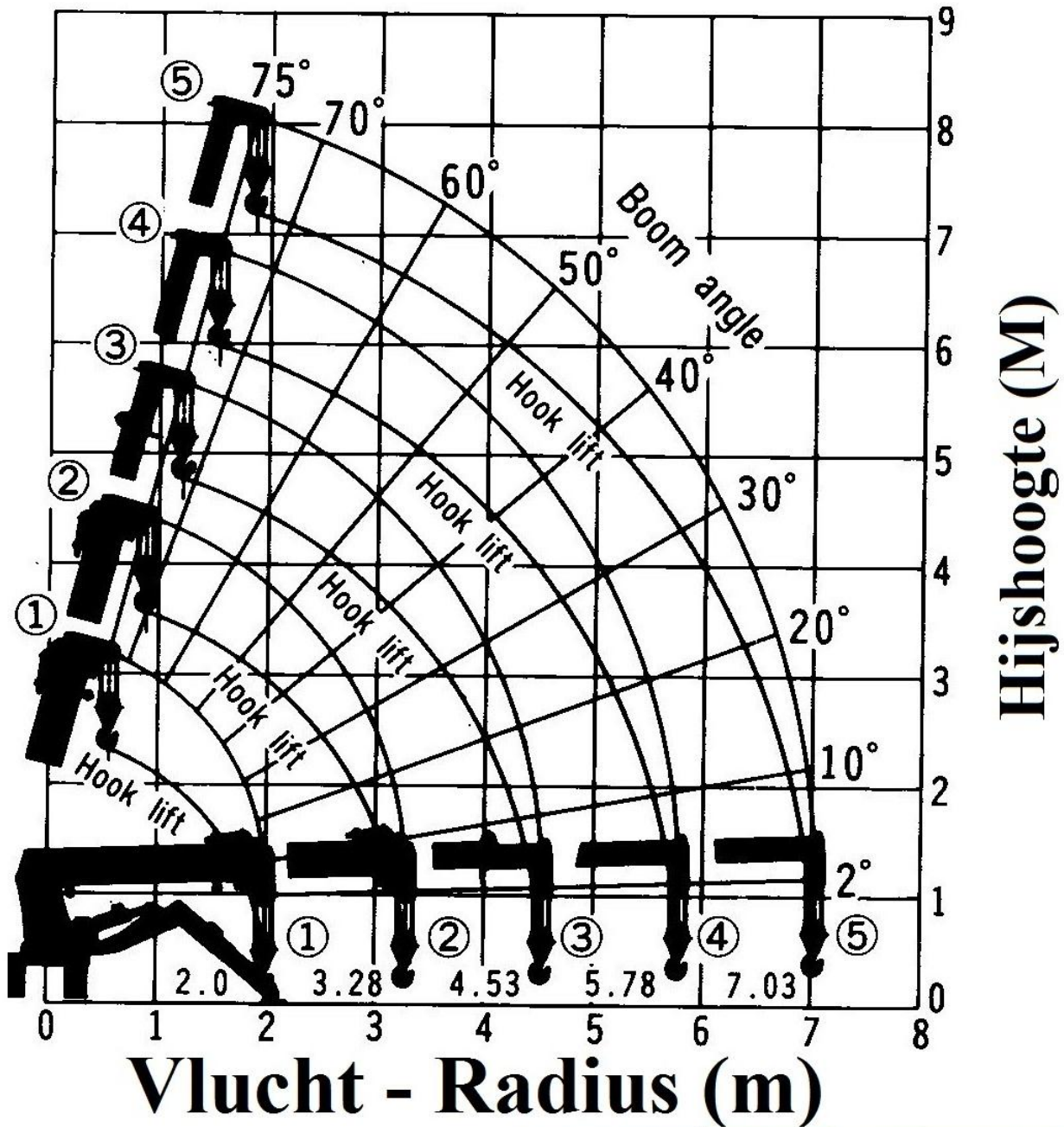
MAEDA MC – 275 C

(Diesel/Electro)



HIJSHOOGTE HAAK:	7.20 M
VLUCHT MAX:	7.00 M
LENGTE:	2.70 M
BREEDTE:	0.76 M
DOORRIJHOOGTE:	1.54 M
RUPS LENGTE:	1.05 M
EIGEN GEWICHT:	1580 KG
STEMPEL DRUK OP 1 STEMPEL IS MAXIMAAL:	1580 KG
TABEL INCLUSIEF HIJSBLOK:	20 KG
AANDRIJVING: VIA HYDRO UNIT OP	220+380V

MC-275C - Vluchtschema



TABEL BIJ MAXIMALEN AFSTEMPELING (L3.65 X B3.25)								TABEL VAN ANDERE AFSTEMPELINGEN, DAN MAXIMAAL							
Boom 1,1+2		Boom 1+2+3		Boom 1+2+3+4		Boom 1+2+3+4+5		Boom 1,1+2		Boom 1+2+3		Boom 1+2+3+4		Boom 1+2+3+4+5	
Working radius (m)	Rated load (kg)	Working radius (m)	Rated load (kg)	Working radius (m)	Rated load (kg)	Working radius (m)	Rated load (kg)	Working radius (m)	Rated load (kg)	Working radius (m)	Rated load (kg)	Working radius (m)	Rated load (kg)	Working radius (m)	Rated load (kg)
1.5 or less	2520	2.5 or less	1570	3.6 or less	700	4.0 or less	550	1.5 or less	1160	2.0 or less	850	3.0 or less	410	3.0 or less	410
1.8	2080	3.0	1020	4.0	550	4.5	400	1.8	970	2.2	740	3.6	320	3.5	320
2.0	1920	3.5	760	4.5	400	5.0	330	2.0	850	2.5	600	4.0	230	4.0	230
2.5	1570	4.0	550	5.0	330	5.5	290	2.5	600	3.0	410	4.5	200	4.5	200
2.7	1270	4.536	400	5.5	290	6.0	260	2.7	520	3.5	320	5.0	150	5.0	150
3.0	1020			5.78	270	6.5	220	3.0	410	4.0	230	5.5	130	6.5	prohibition
3.28	880					7.03	180	3.28	300	4.536	150	5.78	120	7.03	prohibition